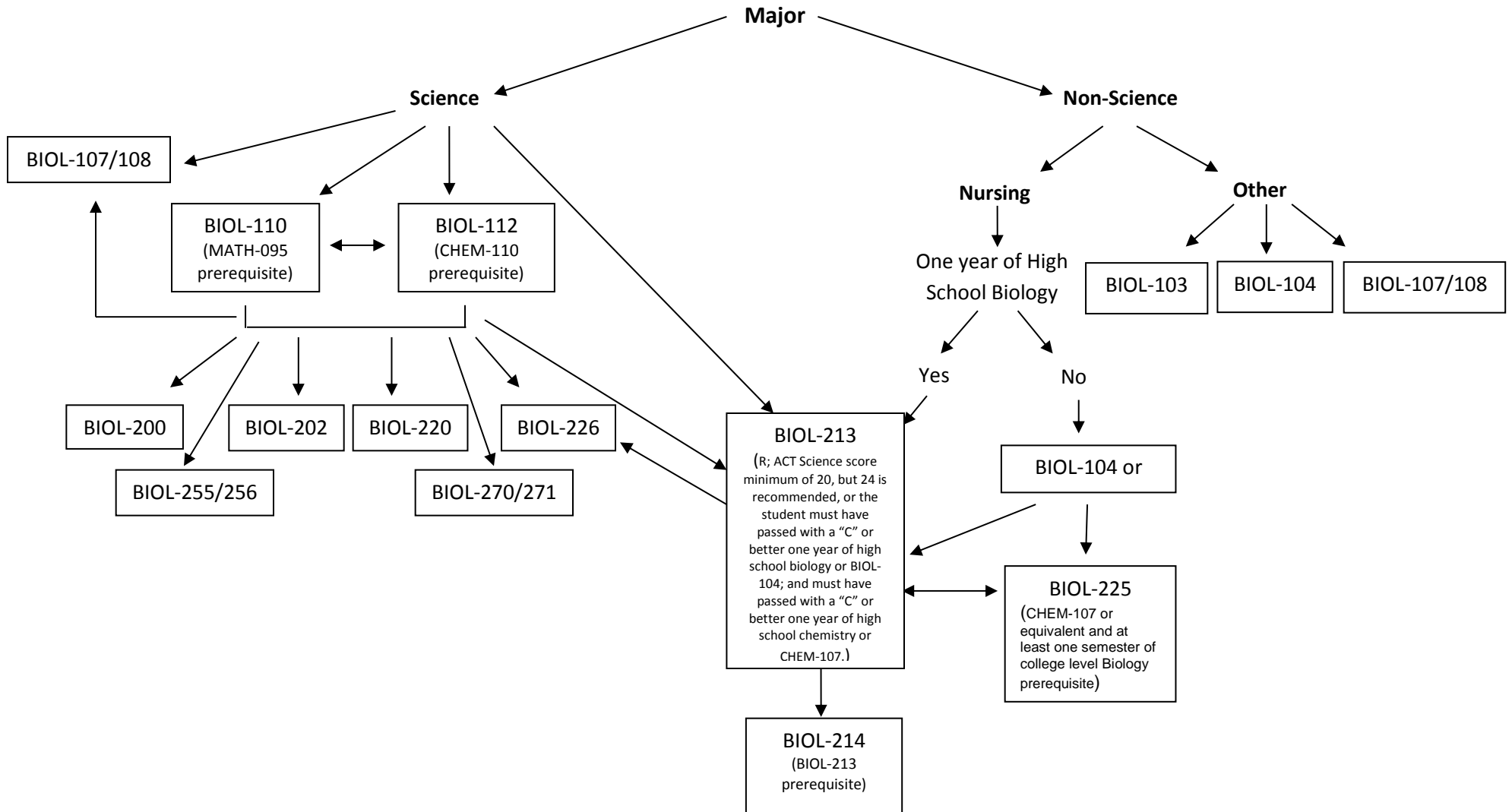


Biology

Not sure which biology class to take? Not sure of the prerequisites? Check out the biology flow chart to see which class you should take.



Notes:

Contact advisor, transfer guide, and program requirements for additional information

BIOL-112 may be taken before BIOL-110, but it is recommended that BIOL-110 is taken first

BIOL-103 can be used as a prerequisite for BIOL-200, BIOL-202, BIOL-220, BIOL-213/214, BIOL-255/256, and BIOL-270/271 instead of BIOL-110 & 1 BIOL-112

BIOL-104 can be used as a prerequisite for BIOL-213/214 instead of BIOL-110 & BI 112

Non-science majors are welcome to take any of the courses listed under Science Majors on the chart