



**MEETING MINUTES**

**BOARD OF TRUSTEES  
SPECIAL MEETING (BUDGET HEARING)**

**BAY de NOC COMMUNITY COLLEGE  
Board Room CB 201D  
Escanaba, MI**

**June 17, 2026**

- I CALL TO ORDER:** The meeting was called to order at 4 p.m. ET by Chair Wendy Middaugh
- II ROLL CALL:**
- Members present: Joy Hopkins, Nick Chenier, Katie VanEnkevort, Terri Mileski, Cory Kuchenberg, Wendy Middaugh
- Member absent: Steve Soderman
- Administration: Beth Berube, Nerita Hughes, Lynn Martinson, Penny Pavlat
- Faculty: Molly Campbell
- Guest: Brandy Johnson, Michigan Community College Association President
- Recorder: Laura Johnson, Assistant Board Secretary
- III CITIZEN INTRODUCTIONS AND COMMENTS**  
Chair Middaugh stated that the meeting also served as a public hearing for the public to consider the College's proposed 2026-27 budget and the proposed property tax millage rate. There was no representation from the public.
- IV APPROVAL OF AGENDA**  
The agenda was approved by unanimous consent.

**V DECLARATION OF INTEREST**

None

**VI 2026-2027 BUDGET REVIEW**

Chair Middaugh turned the meeting over to Lynn Martinson, VP of Finance & Operations, who reviewed the budget assumptions for the 2026-27 Operating Budget for board approval. The presentation slides for the 2026-2027 budget review are attached.

Chair Middaugh invited questions or discussion ahead of the request for approval of the 2026-2027 budget.

Nick Chenier commented that he would like to see tuition and fee rates stabilized and requested a lesser increase be considered if it is impossible to avoid increases.

Group discussion included inquiring about further consideration of the structure of course fees and additional fees like the student development and success fee and technology fee, and how tuition rates and salary and benefit expenses compared to peer community colleges. Despite annual tuition increases being common among higher education institutions, trustees discussed increasing efforts to restrain the increase for the next academic year, 2027-2028, to less than 3%.

Joy Hopkins added that the Bay College Foundation supports a robust scholarship program that assists many students in addition to tuition assistance programs (MI Reconnect and the Community College Guarantee) and other financial aid.

Cory Kuchenberg emphasized the significant value of the quality of education offered by dedicated employees compared to the investment. The larger question of how to increase enrollment needs to be addressed.

**VII BOARD ACTION**

**A Tuition & Fees:**

Chair Middaugh requested a motion to approve the 2026-27 tuition and fee rates.

Nick Chenier proposed that the fee structure be reviewed for 2027-2028 and that the motion to approve 2026-2027 tuition and fees states that every effort be made to limit the tuition increase for next year to under 3%. Cory Kuchenberg thanked Lynn Martinson for all her hard work developing the budget.

It was moved by Joy Hopkins and seconded by Cory Kuchenberg to:

**“Adopt the 2026-2027 tuition and fee rates per contact hour, and the course specific fees as presented in the budget assumptions, with every effort made in the 2027-2028 budget year to limit the tuition increase to under 3%. The**

**tuition and fee rates for all students and Dual Enrolled/Early College students are:**

Tuition and Fees		
Student Residency	2025-2026	2026-2027
	Tuition Rate	Tuition Rate
Delta County	\$160	\$165
Dickinson County	\$238	\$245
In-State	\$275	\$283
Out-of-State	\$337	\$347
International	\$372	\$383
Dual Enrollment	\$160	\$160
Radiography – MWTEC Consortium	\$210	\$210

Dual Enrollment Courses: will be billed a flat rate of \$160 per contact hour. Thus, the Student Development Fee Discount of \$12 per contact hour and Technology Fee Discount of \$37 per contact will be applied. Any other course specific fees will still apply.

Student Development and Success Fee: All students are assessed a \$12.00 per contact hour student development fee (up to a maximum of 16 contact hours per semester). These fees are used to fund many student events, academic support services, athletics, and commencement. Payment of this fee entitles the student to reduced-price tickets to all events provided by the Campus Activities Board.

Technology Fee: Students are charged a \$37.00 per contact hour technology fee for technology services including on-line support and use of campus technology (up to a maximum of 16 contact hours per semester).

Facility Fee: A \$13.00 per contact hour facility fee is charged to all students who are not residents of Delta or Dickinson Counties **and** who are attending classes at the Escanaba or Iron Mountain Campus (excludes: clinics, co-ops, and internships).

Transcript Fee: A \$5.00 per transcript fee will be charged for each transcript requested.

Student Housing Fee: This budget assumes an increase in the ‘per semester’ housing fee from \$1,995 to \$2,055. This nominal increase aligns with inflation trends.”

Roll Call:

Ayes: Terri Mileski, Katie VanEnkevort, Cory Kuchenberg, Joy Hopkins, Nick Chenier, Wendy Middaugh  
Nays: None  
Abstaining: None  
Motion carried unanimously.

**B Millage Levy:**

Chair Middaugh asked whether there were any questions or discussion about Administration's recommendation to levy the full allowable mills of 3.2593.

With no questions, it was moved by Joy Hopkins and seconded by Katie VanEnkevort to:

**"Levy the full voted 3.5000 mills of the current voter millage, subject to such modification as imposed by the provision of Section 31 of the Constitution of the State of Michigan (Headlee Amendment):"**

Type	Original Millage	Max Millage Allowable Under Headlee
Operating Mills	2.5000	2.2593
Debt & Capital Mills	<u>1.0000</u>	<u>1.0000</u>
Total	3.5000	3.2593"

Roll Call:

Ayes: Katie VanEnkevort, Cory Kuchenberg, Joy Hopkins, Nick Chenier, Terri Mileski, Wendy Middaugh  
Nays: None  
Abstaining: None  
Motion carried unanimously.

**C Operating & Capital Budgets:**

Chair Middaugh inquired if anyone had questions or discussion about the operating and capital budgets.

With no questions, it was moved by Joy Hopkins and seconded by Katie VanEnkevort to:

**"Approve the 2026-2027 Operating and Capital Budgets as presented on June 17, 2026, and to make every effort in the 2027-2028 budget to limit the tuition increase to under 3%."**

Roll Call:

Ayes: Cory Kuchenberg, Joy Hopkins, Nick Chenier, Terri Mileski, Katie VanEnkevort, Wendy Middaugh

Nays: None  
Abstaining: None  
Motion carried unanimously.

**VII ADJOURNMENT**

With no further business, it was moved by Nick Chenier and seconded by Cory Kuchenberg to:

**“Adjourn the meeting.”** No discussion. Motion carried unanimously. The meeting adjourned at 4:49 p.m. ET.

---

Laura L. Johnson  
Assistant Board Secretary

Date  
Completed

Approval Date

---

Wendy B. Middaugh  
Chair

Approval Date



# 2026-2027 Budget Review

Lynn Martinson  
*Vice President Finance & Operations*  
[martinsl@baycollege.edu](mailto:martinsl@baycollege.edu)

# Budget Assumptions

## Tuition Revenue

- Flat enrollment
- 3% Increase Tuition & Housing Rates
  - \$8.989 million net tuition revenue
  - \$465 thousand student housing revenue



<b>Tuition and Fees</b>		
<b>Student Residency</b>	<b>2025-2026</b>	<b>2026-2027</b>
	Tuition Rate	Tuition Rate
<b>Delta County</b>	\$160	\$165
<b>Dickinson County</b>	\$238	\$245
<b>In-State</b>	\$275	\$283
<b>Out-of-State</b>	\$337	\$347
<b>International</b>	\$372	\$383
<b>Dual Enrollment/Early College flat rate</b>	\$160	\$160
<b>Radiography – MWTEC Consortium</b>	\$210	\$210
<b>Student Housing per semester</b>	\$1,995	\$2,055

# Budget Assumptions

## State Appropriations Revenue

- **2026-2027 \$7.72 million**
  - Base \$6.645 million
  - Supplemental \$1.076 million
  - **4.5% decrease (\$362 thousand) in Supplemental**
    - MPSERS Offsets – UAAL, Retiree Healthcare, Reform
    - Renaissance Zone/Local Community Stabilization Reimbursements

# State Appropriations Comparison

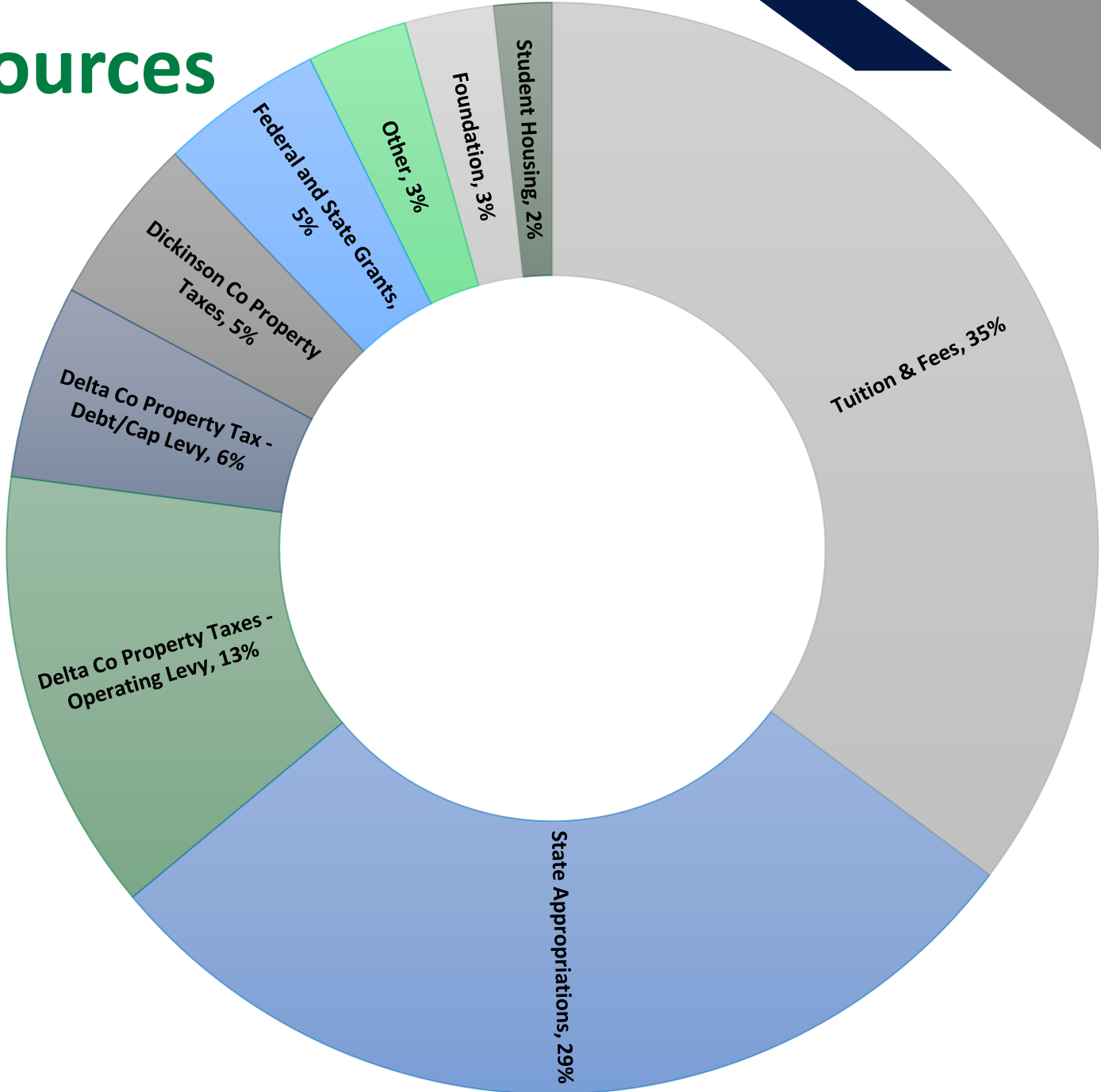
Funding Type	Executive 15.9%	Senate 1.20%	House 1.6%
Operations	\$6,298,000	\$6,298,000	\$6,298,000
Performance Funding	\$178,200	\$234,700	
Indian Tuition Waiver	\$112,300	\$112,300	\$112,300
ITEMS Funding	\$1,038,500		\$262,000
Subtotal	\$7,627,000	\$6,645,000	\$6,672,300
Supplemental	\$1,106,470	\$1,076,225	\$1,076,225
Total	\$8,733,470	\$7,721,225	\$7,748,526

# Budget Assumptions

## Property Tax Revenue

- **Delta County property tax revenue:**
  - **2.6% increase \$5.07 million**
    - Operating Levy \$3.53 million
    - Debt/Capital Levy \$1.54 million
- **Dickinson County property tax revenue:**
  - **1.80% increase \$1.34 million**

# Revenue Sources



# Budget Assumptions

## Expenses

- 3% Salary Increase for Staff and Administration
- Full-time and Part-time Faculty – Collective Bargaining

## Agreements

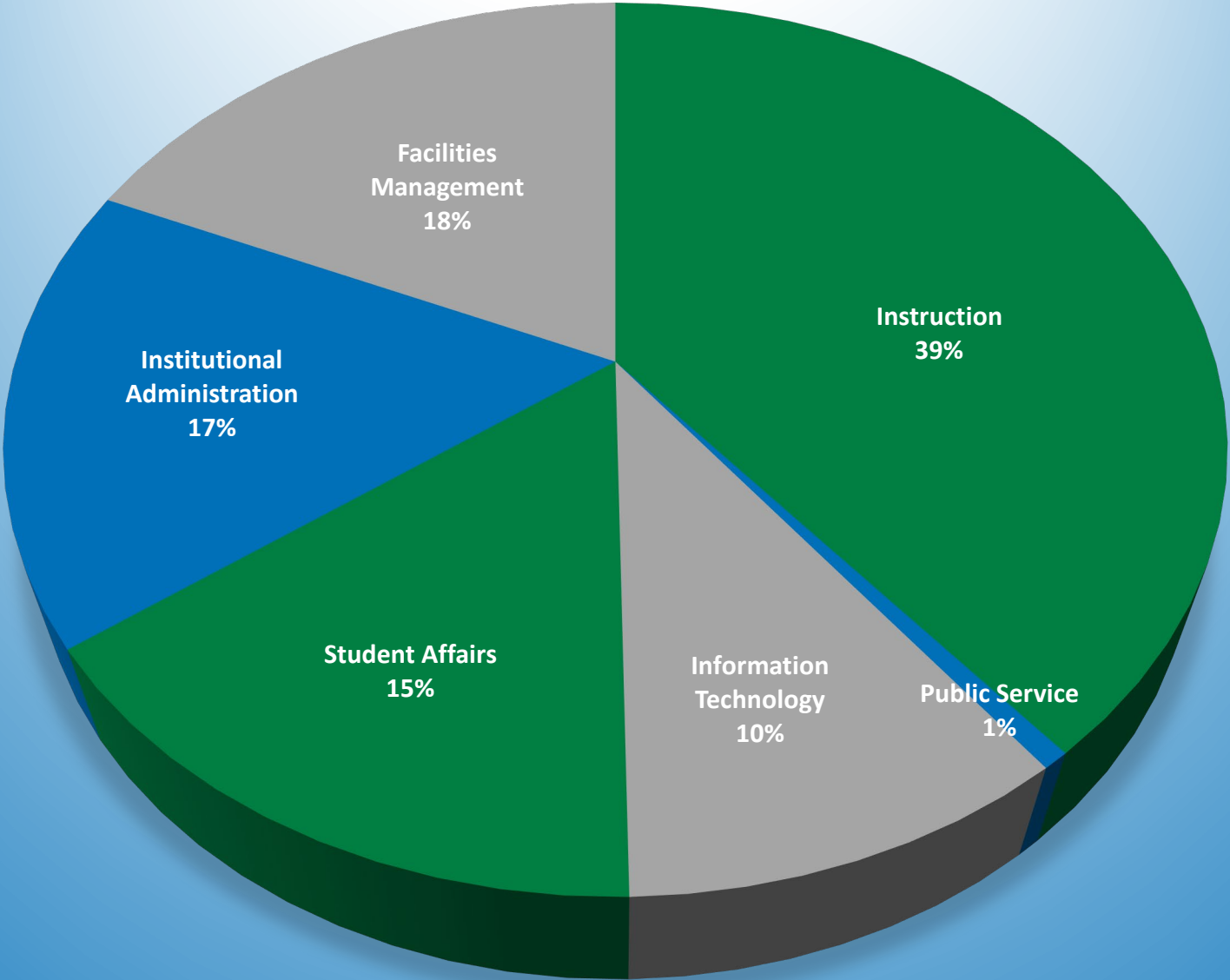
- Health Insurance Increase 2.9% based on PA 152 hard cap

# Budget Assumptions

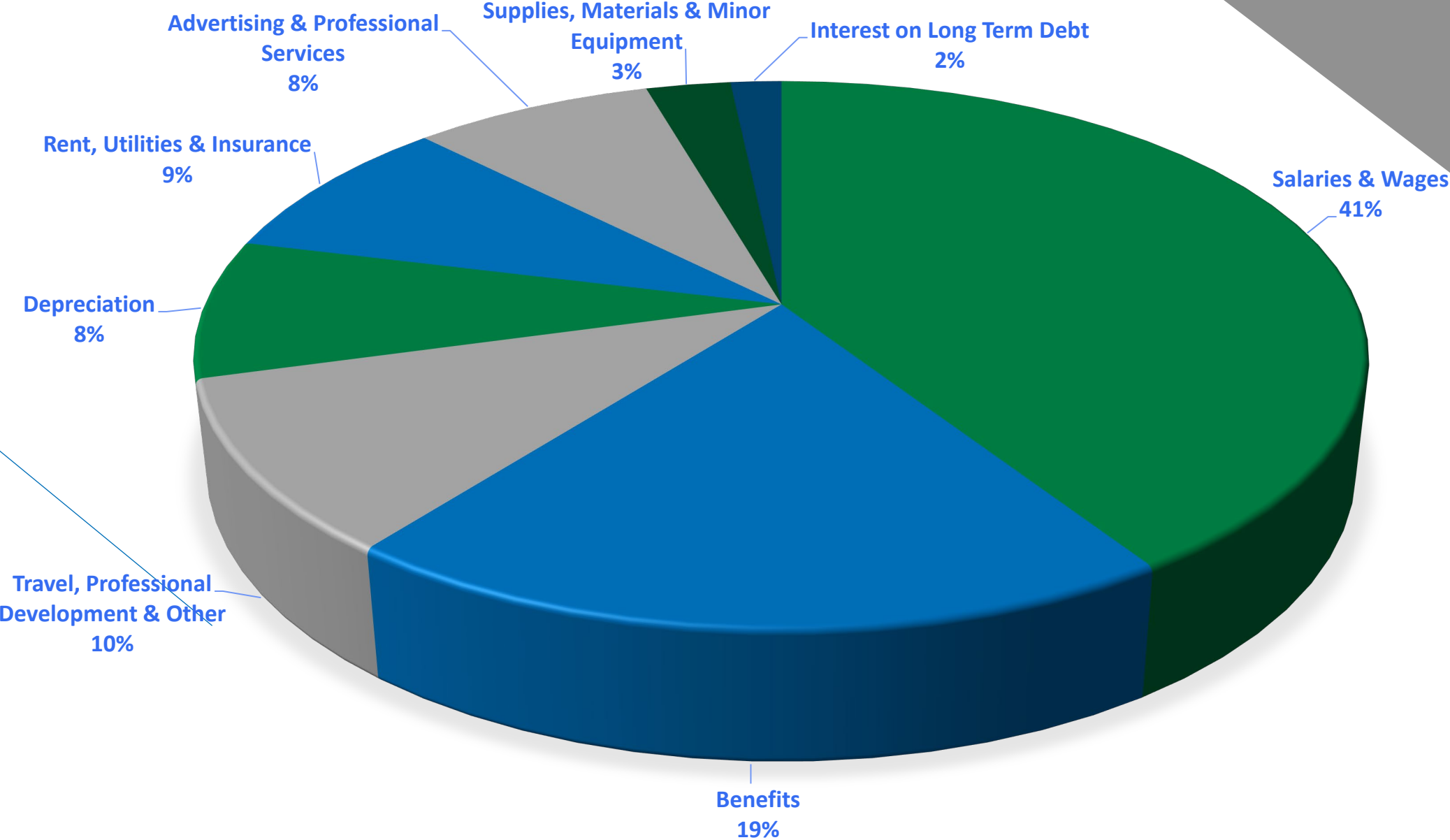
## Expenses

- Investment in Ellucian ERP Implementation - Year Two - \$1.04 million
- Iron Mountain Nursing Course Offerings – Pause - \$ 194 thousand
- Anticipated transfer from General Fund Reserves \$1.234 million
- Deliberate, strategic allocation of resources towards future-focused investment

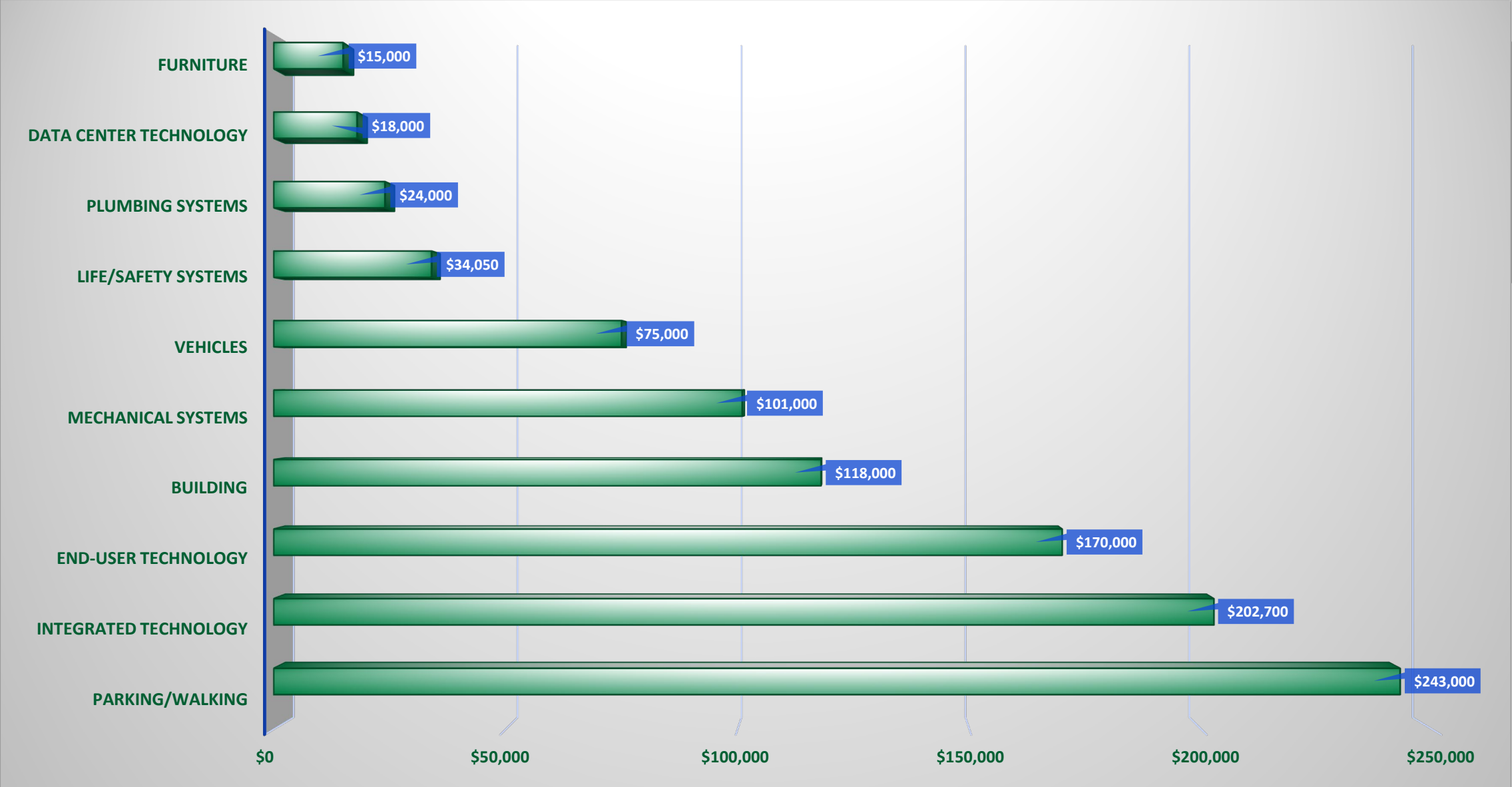
# 2026-2027 Expenditures by Activity



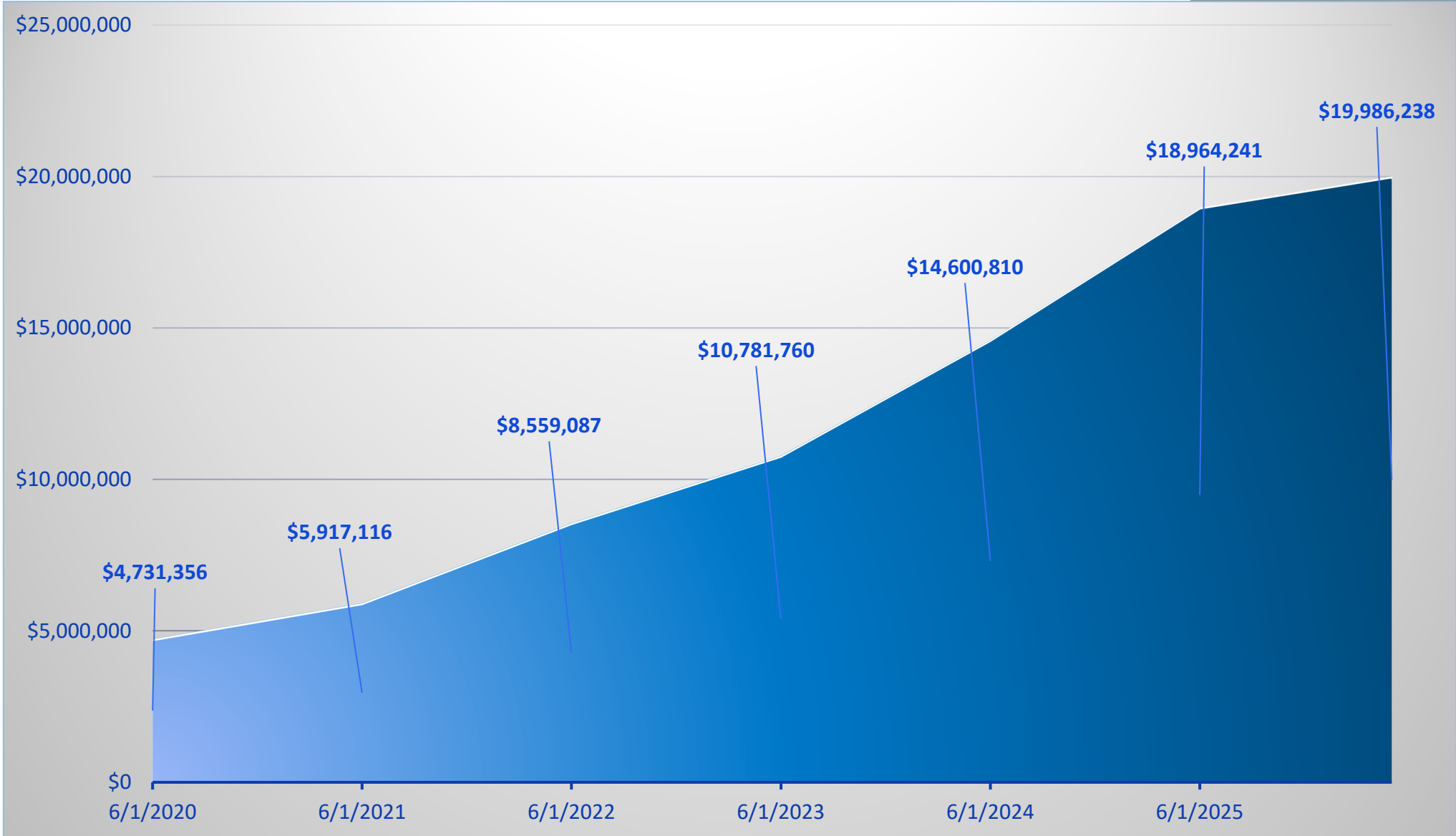
# 2026-2027 Expenditures by Object



# 2026-2027 Capital Budget \$1,000,750



# Bay College Net Position 2020 – 2026



Questions?

